

Veolia and Leeds City Council
**increasing recycling
and generating energy
from the City's waste**

Cross Green Industrial Estate



This information booklet has been produced to provide you with an introduction to Veolia Environmental Services and an explanation of how its Recycling and Energy Recovery Facility (RERF) fits in with increasing recycling and sustainability in Leeds.

In November 2011, Veolia Environmental Services was announced 'preferred bidder' by Leeds City Council to develop a combined facility that will remove recyclable material from black bin residual waste before recovering energy from the remainder and minimising its disposal to landfill.

We intend to submit a planning application for the new Recycling and Energy Recovery Facility (RERF) in Spring 2012. Before then we will make sure that local communities and other stakeholders including the Environment Agency are kept informed and have a chance to give us their views as the proposals develop.

The landmark recycling and energy recovery facility proposed for the Cross Green Industrial Estate will create around three hundred jobs during construction and around forty-five permanent posts making an important contribution to the local economy.

It will increase recycling and generate sufficient electricity to power 20,000 homes. It will also save the city £200 million over 25 years compared to the costs of continuing to landfill residual household waste.

Over 120 local authorities across the UK work with Veolia Environmental Services

Who we are

Veolia Environmental Services is a global company that uses its expertise to provide recycling and waste management solutions for local communities and businesses. Our services benefit over a third of the UK population and the company currently operates 56 treatment facilities including ten recycling facilities and six Energy Recovery Facilities in the UK, with another two under construction. We use our global expertise to deliver local solutions that meet the highest environmental and technical standards.

More information about our company, expertise and experience is available at www.veolia.co.uk

Managing waste in Leeds

At the moment around 40% of household waste in Leeds is recycled or composted. Leeds City Council is working with the public to increase this recycling rate to a minimum of 50%, with aspirations to exceed this level in the longer term.

Our solution supports this goal but, even with increased recycling rates, there will always be an amount of waste that cannot be recycled. Last year Leeds sent over 200,000 tonnes of waste to be buried in landfill.

The proposed facility will handle up to 183,000 tonnes of residual waste of which at least 10% will be recycled at the front end by mechanical pre-treatment and sorting processes. The remainder will be used to generate over 11 MW of electricity for supply to the National Grid – sufficient to power 20,000 homes. This will reduce carbon dioxide emissions by the same amount as taking around 29,000 cars off the road each year when compared to landfill.

The Council will only be required to supply a minimum of 120,000 tonnes of waste to the facility, which is well below its projected levels. Any shortfalls in household waste as a result of higher than expected increases in recycling rates will be made up with similar wastes from the business sector in Leeds.



The facility will increase recycling in Leeds and provide sufficient power for 20,000 homes



The facility is designed to operate efficiently and minimise environmental impact

Introducing the facility

The internationally renowned architect, Jean-Robert Mazaud of S'pace Architects who has been instrumental in the development of many iconic UK recycling and waste management buildings has designed this Facility.

The key design features are:

- A main building that we estimate will be approximately 42m high (for comparison, the Leeds Civic Hall is 52m), with a slimline chimney stack design
- A design that creates a positive landmark for the Aire Valley region of Leeds and the Cross Green Industrial Estate
- An innovative design based upon the use of glass and timber framing, dubbed by some "the Greenhouse"
- A green 'living' wall to the southern façade to enhance the visual impact and provide bio-diversity, one of the largest of its type in the country
- A visitor centre that offers people the opportunity to learn more about the facility and other waste management issues.

The final design will be confirmed after consultation with the local community and other stakeholders.



The green 'living' wall to the southern façade

The location

We propose to build our facility on the former wholesale market site off the East Leeds Link Road within the Cross Green Industrial Estate.

We have selected this site because it is:

- Adjacent to the newly completed A63 East Leeds Link Road, close to the existing Council waste collection vehicle depot
- Well linked to primary routes across the City, with access restrictions through neighbouring residential areas
- Identified as a suitable location from the 2,000 considered in an extensive study
- Available and was offered to bidders as a location for a facility to treat residual waste
- Within an extensive industrial area and large enough to locate a facility of this size and type.
- A brownfield site, meaning the land has previously been developed
- On an existing route used by Council vehicles to take black bin waste to landfill

More information about how the facility would operate can be found on our website at www.veolia.co.uk/Leeds

For more information about the background to our proposal see www.leeds.gov.uk/recycleforleeds



Thinking about key issues

We are keen to give local people the facts about our proposals and information about the kinds of key issues that are often raised during the development of RERFs.

Traffic

We have designed the facility to treat only black bin type residual waste generated within the Leeds area.

All deliveries will be by road via the East Leeds Link Road (ELLR) and we will not use the railway sidings or other forms of transport.

The East Leeds Link Road connects to the A1/M1 Link Road, the M621 and the Inner Ring Road at either end, and therefore provides access to the facility from all major routes into the City.

There are weight limits that stop HGVs, including refuse collection vehicles, accessing the ELLR from the A64 through the closest residential areas of East End Park, Osmondthorpe and Halton Moor.

The majority of the waste deliveries would take place during the day in between the morning and evening peak traffic periods. Most of the waste delivered to the facility would arrive in waste collection vehicles and a substantial proportion of these deliveries are currently taken to the Skelton Grange landfill site accessed using the same roads.



The facility will provide jobs and training for local people as well as opportunities for local businesses

Local environment and air quality

Our planning application will consider what impact the proposed facility will have on environmental factors including air quality and emissions, noise, ecology, landscape, views and water quality. We will also present proposals to minimise any impact on the surrounding area.

In addition to applying for planning permission, a separate application will also be made to the Environment Agency for an environmental permit to operate the facility. The permit will set emission limits and chimney height based upon information submitted. All emissions will be continuously measured and monitored by the Environment Agency as regulator, and reported on our own website.

The Health Protection Agency, which is an independent UK agency responsible for protecting the public from environmental hazards, has reviewed the latest scientific evidence and concluded that modern, well run, regulated, energy recovery facilities do not present a significant risk to public health.

You can read this review at: www.hpa.org.uk

Local benefits

Veolia will work with local colleges and agencies to provide jobs and training to local people in the construction and operation of the RERF. Around three hundred temporary jobs will be created during the construction of the facility and around forty-five permanent posts – both technical and non-technical. We will also run apprenticeships, work placements and work experience schemes.

We will also support the economy in Leeds by working with local suppliers and recyclers, including charities, where possible. Veolia encourages its suppliers and contractors to buy locally and employ local people themselves.

The development of the RERF may attract other investment into the area due to its iconic design and the potential availability of heat for suitable users.

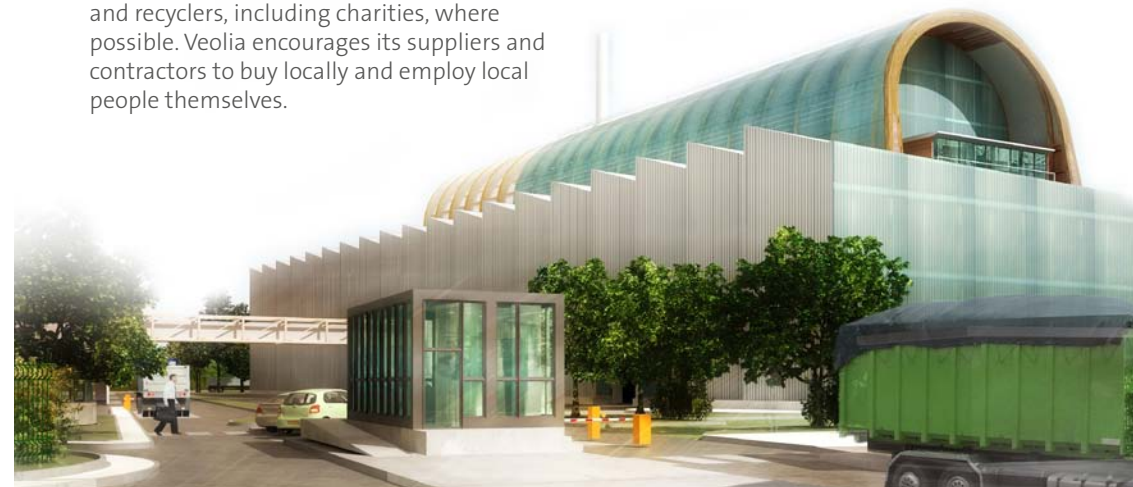
The RERF is designed to increase recycling and recover energy, but it will also help local biodiversity with its living wall and extensive landscaping.

Our staff volunteering, education work and community sponsorship programme will support local charities and events.

As part of the consultation process we would like to hear your ideas about how you think the development can provide benefits to you.

What happens next?

We intend to submit our planning application for the RERF at Cross Green in Spring 2012. This application will be considered by the Local Planning Authority, who are independent of the waste procurement process, and a decision is expected early 2013. Whilst our planning application is being considered we will keep local communities updated via our dedicated website, freephone information line, e-mail alert service, text messaging service and community access points.





Get involved

We want to discuss our proposed facility with local residents and businesses and hear your views to help shape our proposals before we submit our planning application.

We are particularly keen to establish a Community Liaison Group that will give representatives from the community the opportunity to get actively involved in shaping the proposals. If you would like to find out more about joining the

Community Liaison Group please contact us via email or post. Please remember to include your name and address.

We will send you more details about how the group will work along with an application form.

Contact us to find out how to become a member of the Community Liaison Group
E: leeds.enquiries@veolia.co.uk

Write to FREEPOST VEOLIA

To find out more, you can:

Call our dedicated, freephone information line on **0800 085 8980**.
The line is open Monday to Friday, 9am to 5pm, with an answerphone at all other times.

Visit www.veolia.co.uk/Leeds

This site includes:

- Regular updates as our proposals develop further
- A response form you can complete to ask questions and provide feedback
- An opportunity to register for regular email updates.

Email Leeds.Enquiries@veolia.co.uk

Write to **FREEPOST VEOLIA**

Or text '**VEOLIA**' to '**66777**' to receive regular text updates.

